

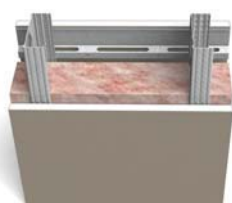
	Assembly Description	STC	WEAL Test No.	Partition Type
3-5/8" ProSTUD Pro 25 with 5/8" Type X	3-5/8" ProSTUD Pro 25 @ 24" o.c. + 1 layer 5/8" Type X GWB each side	43	TL09-539	1
	3-5/8" ProSTUD Pro 25 @ 24" o.c. + 3-1/2" R-13 unfaced insulation + 1 layer 5/8" Type X GWB each side	48	TL09-540	2
	3-5/8" ProSTUD Pro 25 @ 24" o.c. + 3-1/2" R-13 unfaced insulation + 2 layers 5/8" Type X GWB each side	54	TL09-538	Similar 2
	3-5/8" ProSTUD Pro 25 @ 24" o.c. + 3-1/2" R-13 unfaced insulation + RCSD with 1 layer 5/8" Type X GWB + 1 layer 5/8" Type X GWB on the other side	52	TL09-542	3
	3-5/8" ProSTUD Pro 25 @ 24" o.c. + 3-1/2" R-13 unfaced insulation + RCSD with 2 layers 5/8" Type X GWB + 1 layer 5/8" Type X GWB on the other side	59	TL09-543	4
	3-5/8" ProSTUD Pro 5 @ 24" o.c. + 3-1/2" R-13 unfaced insulation + RCSD with 2 layers 5/8" Type X GWB + 2 layers 5/8" Type X GWB on the other side	62	TL09-544	5
2-1/2" ProSTUD Pro 25 with 5/8" Type X	2-1/2" ProSTUD Pro 25 @ 24" o.c. + 1 layer 5/8" Type X GWB each side	38	TL09-576	1
	2-1/2" ProSTUD Pro 25 @ 24" o.c. + 3-1/2" R-13 unfaced insulation + 1 layer 5/8" Type X GWB each side	45	TL09-577	2
	2-1/2" ProSTUD Pro 25 @ 24" o.c. + 3-1/2" R-13 unfaced insulation + RCSD with 1 layer 5/8" Type X GWB + 1 layer 5/8" Type X GWB on the other side	51	TL09-578	3
	2-1/2" ProSTUD Pro 25 @ 24" o.c. + 3-1/2" R-13 unfaced insulation + RCSD with 2 layers 5/8" Type X GWB + 1 layer 5/8" Type X GWB on the other side	58	TL09-579	4
	2-1/2" ProSTUD Pro 25 @ 24" o.c. + 3-1/2" R-13 unfaced insulation + RCSD with 2 layers 5/8" Type X GWB + 2 layers 5/8" Type X GWB on the other side	62	TL09-580	5
3-5/8" ProSTUD Pro 25 with 1/2" Regular	3-5/8" ProSTUD Pro 25 @ 24" o.c. + 3-1/2" R-13 unfaced insulation + RCSD with 1 layer 1/2" regular GWB + 1 layer 1/2" regular GWB on the other side	50	TL09-546	3
	3-5/8" ProSTUD Pro 25 @ 24" o.c. + 3-1/2" R-13 unfaced insulation + RCSD with 2 layers 1/2" regular GWB + 1 layer 1/2" regular GWB on the other side	54	TL09-547	4
	3-5/8" ProSTUD Pro 25 @ 24" o.c. + 3-1/2" R-13 unfaced insulation + RCSD with 2 layers 1/2" regular GWB + 2 layer 1/2" regular GWB on the other side	59	TL09-548	5
3-5/8" ProSTUD Pro 25 @ 16" O.C. with 5/8" Type X	3-5/8" ProSTUD Pro 25 @ 16" o.c. + 3-1/2" R-13 unfaced insulation + RCSD with 1 layer 5/8" Type X GWB + 1 layer 5/8" Type X GWB on the other side	51	TL09-570	3
	3-5/8" ProSTUD Pro 25 @ 16" o.c. + 3-1/2" R-13 unfaced insulation + RCSD with 2 layers 5/8" Type X GWB + 1 layer 5/8" Type X GWB on the other side	58	TL09-571	4
	3-5/8" ProSTUD Pro 25 @ 16" o.c. + 3-1/2" R-13 unfaced insulation + RCSD with 2 layers 5/8" Type X GWB + 2 layers 5/8" Type X GWB on the other side	62	TL09-572	5
3-5/8" ProSTUD Pro 25 @ 16" O.C. with 5/8" HI Impact	3-5/8" ProSTUD Pro 25 @ 16" o.c. + 3-1/2" R-13 unfaced insulation + RCSD with 1 layer 5/8" Hi Impact XP Fire-Shield GWB + 1 layer 5/8" Hi Impact XP Fire-Shield GWB on the other side	55	TL09-573	3
	3-5/8" ProSTUD Pro 25 @ 16" o.c. + 3-1/2" R-13 unfaced insulation + RCSD with 2 layers 5/8" Hi Impact XP Fire-Shield GWB + 1 layer 5/8" Hi Impact XP Fire-Shield GWB on the other side	62	TL09-574	4
	3-5/8" ProSTUD Pro 25 @ 16" o.c. + 3-1/2" R-13 unfaced insulation + RCSD with 2 layers 5/8" Hi Impact XP Fire-Shield GWB + 2 layers 5/8" Hi Impact XP Fire-Shield GWB on the other side	65	TL09-575	5



Partition Type 1



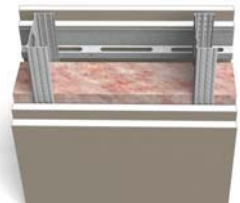
Partition Type 2



Partition Type 3

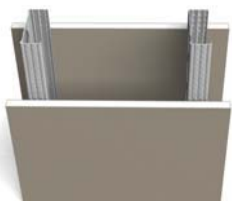


Partition Type 4

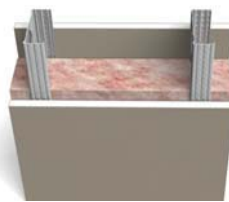


Partition Type 5

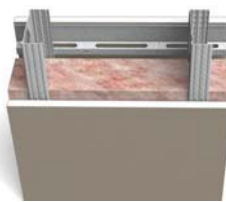
	Assembly Description	STC	WEAL Test No.	Partition Type
3-5/8" ProSTUD Pro 22 with 5/8" Type X	3-5/8" ProSTUD Pro 22 @ 24" o.c. + 1 layer 5/8" Type X GWB each side	42	TL09-565	1
	3-5/8" ProSTUD Pro 22 @ 24" o.c. + 3-1/2" R-13 unfaced insulation + 1 layer 5/8" Type X GWB each side	44	TL09-566	2
	3-5/8" ProSTUD Pro 22 @ 24" o.c. + 3-1/2" R-13 unfaced insulation + RCSD with 1 layer 5/8" Type X GWB + 1 layer 5/8" Type X GWB on the other side	49	TL09-567	3
	3-5/8" ProSTUD Pro 22 @ 24" o.c. + 3-1/2" R-13 unfaced insulation + RCSD with 2 layers 5/8" Type X GWB + 1 layer 5/8" Type X GWB on the other side	56	TL09-568	4
	3-5/8" ProSTUD Pro 22 @ 24" o.c. + 3-1/2" R-13 unfaced insulation + RCSD with 2 layers 5/8" Type X GWB + 2 layers 5/8" Type X GWB on the other side	61	TL09-569	5
3-5/8" ProSTUD Pro 20 with 5/8" Type X	3-5/8" ProSTUD Pro 20 @ 24" o.c. + 1 layer 5/8" Type X GWB each side	40	TL09-557	1
	3-5/8" ProSTUD Pro 20 @ 24" o.c. + 3-1/2" R-13 unfaced insulation + 1 layer 5/8" Type X GWB each side	45	TL09-558	2
	3-5/8" ProSTUD Pro 20 @ 24" o.c. + 3-1/2" R-13 unfaced insulation + RCSD with 1 layer 5/8" Type X GWB + 1 layer 5/8" Type X GWB on the other side	50	TL09-559	3
	3-5/8" ProSTUD Pro 20 @ 24" o.c. + 3-1/2" R-13 unfaced insulation + RCSD with 2 layers 5/8" Type X GWB + 1 layer 5/8" Type X GWB on the other side	56	TL09-560	4
	3-5/8" ProSTUD Pro 20 @ 24" o.c. + 3-1/2" R-13 unfaced insulation + RCSD with 2 layers 5/8" Type X GWB + 2 layers 5/8" Type X GWB on the other side	61	TL09-561	5
2-1/2" ProSTUD Pro 20 with 5/8" Type X	2-1/2" ProSTUD Pro 20 @ 24" o.c. + 3-1/2" R-13 unfaced insulation + RCSD with 1 layer 5/8" Type X GWB + 1 layer 5/8" Type X GWB on the other side	49	TL09-581	3
	2-1/2" ProSTUD Pro 20 @ 24" o.c. + 3-1/2" R-13 unfaced insulation + RCSD with 2 layers 5/8" Type X GWB + 1 layer 5/8" Type X GWB on the other side	56	TL09-582	4
	2-1/2" ProSTUD Pro 20 @ 24" o.c. + 3-1/2" R-13 unfaced insulation + RCSD with 2 layers 5/8" Type X GWB + 2 layers 5/8" Type X GWB on the other side	59	TL09-583	5
6" ProSTUD Pro 25 with 5/8" Type X	6" ProSTUD Pro 25 @ 24" o.c. + 3-1/2" R-13 unfaced insulation + RCSD with 1 layer 5/8" Type X GWB + 1 layer 5/8" Type X GWB on the other side	52	TL09-584	3
	6" ProSTUD Pro 25 @ 24" o.c. + 3-1/2" R-13 unfaced insulation + RCSD with 2 layers 5/8" Type X GWB + 1 layer 5/8" Type X GWB on the other side	58	TL09-585	4
	6" ProSTUD Pro 25 @ 24" o.c. + 3-1/2" R-13 unfaced insulation + RCSD with 2 layers 5/8" Type X GWB + 2 layers 5/8" Type X GWB on the other side	63	TL09-586	5



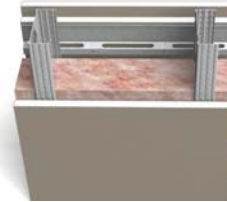
Partition Type 1



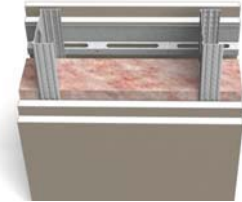
Partition Type 2



Partition Type 3



Partition Type 4



Partition Type 5

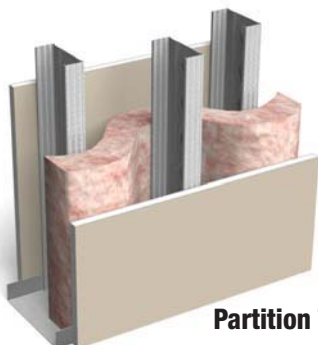
GWB: Gypsum Wall Board

RCSD: Dietrich Metal Framing — "RC Deluxe" Resilient Channel

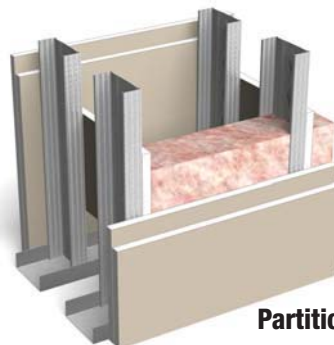
STC: Sound Transmission Class

NVLAP: National Voluntary Laboratory Accreditation Program

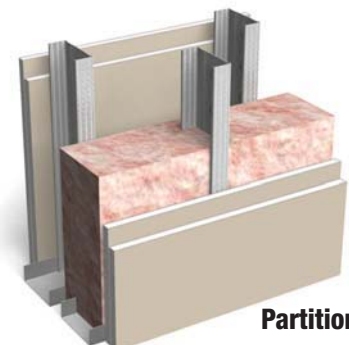
	Assembly Description	STC	WEAL Test No.	Partition Type
Single 6" ProTRAK Pro 25 with staggered 3-5/8" ProSTUD Pro 25	Chase Wall: 2 rows of 3-5/8" ProSTUD Pro 25 @ 16" oc, staggered 8" on center. Studs attached to one flange of a single 6" ProTRAK Pro 25 + 3-1/2" R-13 "woven" between the studs + 1 layer 5/8" Type X gypsum board each side of the wall. Joints for single layer of GWB on the source side of the wall were offset from the joints on the receive side of the wall.	49	TL09-587	6
	Chase Wall: 2 rows of 3-5/8" ProSTUD Pro 25 @ 16" oc, staggered 8" on center. Studs attached to one flange of a single 6" ProTRAK Pro 25 + 3-1/2" R-13 "woven" between the studs + 1 layer 5/8" Type X gypsum board on the source side of the partition and 2 layers of 5/8" Type X GWB on the receive side of the wall. Joints of first layer of GWB on the source side of the wall were offset from the joints on the receive side of the wall.	52	TL09-588	Similar 6
	Chase Wall: 2 rows of 3-5/8" ProSTUD Pro 25 @ 16" oc, staggered 8" on center. Studs attached to one flange of a single 6" ProTRAK Pro 25 + 3-1/2" R-13 "woven" between the studs + 2 layers 5/8" Type X gypsum board on the source side of the partition and 2 layers of 5/8" Type X GWB on the receive side of the wall. Joints of first layer of GWB on the source side of the wall were offset from the joints on the receive side of the wall.	56	TL09-589	Similar 6
Similar UL U420: Two parallel rows 1-5/8" ProSTUD Pro 25	Chase Wall: 2 parallel rows of 1-5/8" ProSTUD Pro 25 studs @ 24" oc (9-1/2" out-to-out of metal tracks) + 3-1/2" R-13 stapled to one wall + 12" x 9-1/2" gwb braces @ 4' oc + 1 layer 5/8" Type X gypsum board on the source side of the partition and 1 layer of 5/8" Type X GWB on the receive side of the wall. Align studs in the parallel walls. Drywall gussets installed at the midheight of the partition. First and last studs do not have drywall gussets attached to them. Joints for single layer of GWB on the source side of the wall were offset from the joints on the receive side of the wall.	55	TL09-590	Similar 7
	Chase Wall: 2 parallel rows of 1-5/8" ProSTUD Pro 25 studs @ 24" oc (9-1/2" out-to-out of metal tracks) + 3-1/2" R-13 stapled to one wall + 12" x 9-1/2" gwb braces @ 4' oc + 1 layer 5/8" Type X gypsum board on the source side of the partition and 2 layers of 5/8" Type X GWB on the receive side of the wall. Align studs in the parallel walls. Drywall gussets installed at the midheight of the partition. First and last studs do not have drywall gussets attached to them. Joints of first layer of GWB on the source side of the wall were offset from the joints on the receive side of the wall.	59	TL09-591	Similar 7
	Chase Wall: 2 parallel rows of 1-5/8" ProSTUD Pro 25 studs @ 24" oc (9-1/2" out-to-out of metal tracks) + 3-1/2" R-13 stapled to one wall + 12" x 9-1/2" gwb braces @ 4' oc + 2 layers 5/8" Type X gypsum board each side. Align studs in the parallel walls. Drywall gussets installed at the midheight of the partition. First and last studs do not have drywall gussets attached to them. Joints of first layer of GWB on the source side of the wall were offset from the joints on the receive side of the wall.	61	TL09-592	7
Similar UL U493: Two rows staggered 2-1/2" ProSTUD Pro 25	Parallel Walls: 2 rows of 2-1/2" ProSTUD Pro 25 studs (staggered in opposite walls) @ 24" oc (6" out-to-out) with 1" between rows of 2-1/2" ProTRAK Pro 25 + 3-1/2" R-13 stapled to one wall + 1 layer 5/8" Type X USG gypsum board each side. Stagger studs evenly between the rows. Spazzer 9200 bridging 5' max. Joints for single layer of GWB on the source side of the wall were offset from the joints on the receive side of the wall.	58	TL09-593	Similar 8
	Parallel Walls: 2 rows of 2-1/2" ProSTUD Pro 25 studs (staggered in opposite walls) @ 24" oc (6" out-to-out) with 1" between rows of 2-1/2" ProTRAK Pro 25 + 3-1/2" R-13 stapled to one wall + 1 layer 5/8" Type X USG gypsum board on the source side of the partition and 2 layers of 5/8" Type X USG GWB on the receive side of the wall. Stagger studs evenly between the rows. Spazzer 9200 bridging 5' max. Joints for single layer of GWB on the source side of the wall were offset from the joints on the receive side of the wall.	63	TL09-594	Similar 8
	Parallel Walls: 2 rows of 2-1/2" ProSTUD Pro 25 studs (staggered in opposite walls) @ 24" oc (6" out-to-out) with 1" between rows of 2-1/2" ProTRAK Pro 25 + 3-1/2" R-13 stapled to one wall + 2 layers 5/8" Type X USG gypsum board on the source side of the partition and 2 layers of 5/8" Type X USG GWB on the receive side of the wall. Stagger studs evenly between the rows. Spazzer 9200 bridging 5' max. Joints for single layer of GWB on the source side of the wall were offset from the joints on the receive side of the wall.	65	TL09-595	8



Partition Type 6



Partition Type 7



Partition Type 8